

Friday, 11th October
2024

Kingsfield's



NEWSLETTER



A message from Mrs Hodson...

It has been wonderful to see so many of you in school this week for our Parents Evenings. We hope you found them useful. If you were unable to attend, please contact your child's class teacher to book a phone call, or an appointment on an alternative day.

On Thursday we raised awareness by wearing yellow on World Mental Health Day. We shared strategies for how to support ourselves and others with our mental health, which I'm sure you'll agree is an excellent skill to have. Our spotlight this week shows how we prioritise supporting children with their mental health at Kingsfield, through our ELSA sessions in school.

Thank you to everyone that attended the Sleep workshop led by Kathryn from the MHST-you can find out more about their services, on last week's spotlight.

We hope you all have a lovely weekend, from Mrs Hodson, Ozzy, Elvis and all at Team Kingsfield.

This Week's
Winners is:
Fantastic Foxes

Class	Attendance
Brilliant Butterflies	96%
Busy Bees	97.63%
Charming Cheetahs	96.5%
Perfect Panthers	98.46%
Learning Lions	98.48%
Super Squirrels	96.77%
Fantastic Foxes	98.87%
Wise Owls	97.23%

School Matters!



Our whole school attendance
target is 96%.
This week, our school attendance
was: **97.48%**



Next week
we are on
week 1 of
our lunch

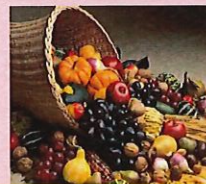
Next Week...

Monday	
Tuesday	Wise Owls Swimming-6 Y4 Standon Bowers information evening 3.15 or 5.30pm Y4 Tag Rugby
Wednesday	
Thursday	Fantastic Foxes Forest School-2
Friday	

Please see our website for dates and
times of events for the year ahead.

[Calendar - Kingsfield First School |
Biddulph | Staffordshire](#)

On Wednesday, 23rd October we will be having our Harvest Assembly in school. We would like to ask for donations of food for our local food bank to support families in our local area.



This week the Book Fair is in school, thank you so much if you have attended so far, there is still one more chance before and after school on Monday-there are lots of fabulous books to choose from to suit all budgets. Every book that is purchased, raises commission for our school, so that we can add to our library.

Rewards and Celebrations



Clever Caterpillars - Rhea
Brilliant Butterflies - Reggie B
Busy Bees - Reggie W
Charming Cheetahs - Ellis
Perfect Panthers - Chloe B
Learning Lions - Oscar D
Super Squirrels - Amya
Fantastic Foxes - Ethan
Wise Owls - Callum

Clever Caterpillars - Freddie
Brilliant Butterflies - Jaxon
Busy Bees - Zakk
Charming Cheetahs - Pippa
Perfect Panthers - Jacob
Learning Lions - Effie
Super Squirrels - Bella
Fantastic Foxes - Jaxon
Wise Owls - Lily

Clever Caterpillars - Lottie
Brilliant Butterflies - Leo
Busy Bees - Mckenzie
Charming Cheetahs - Alana
Perfect Panthers - Chloe-Leigh
Learning Lions - Ethan
Super Squirrels - Dylan
Fantastic Foxes - Ronnie
Wise Owls - Irea



Other Celebrations....

Please send an email to office.kng@cflptrust.co.uk if you would like to share any of your child's outside of school achievements.

House Points

Mars	363
Earth	506
Saturn	506
Jupiter	437

easyfundraising

Support your child's future

Sign up to online cashback site, easyfundraising, and select your child's school as your chosen good cause.

Then, when you shop online with over 8,000 retailers, the retailer will give the school a free donation as a thank you for shopping with them.

It's as simple as that. No matter what you buy, from food shops to holidays and everything in between - it's a free and easy way to support your school.



How to get started

Head to easyfundraising.org.uk/support-a-good-cause and search for your child's school, or scan the QR code.

Registration is free and will take you less than two minutes to sign up!



17,000 schools and PTAs have raised over £12.5 million using easyfundraising.

Sign up and support your child's future today.

**you scan,
we donate
££s TO
SCHOOLS.**



Asda Rewards Cashpot for Schools

Cashpot for Schools Terms & Conditions Asda Rewards Terms & Conditions

1

Download and sign up to the Asda Rewards app
Opt into the Cashpot for Schools campaign and select a specific primary school or select 'Schools in Need'.

2

Shop in store across Asda and George, or online at Asda.com
Asda will donate a percentage of your shop to your chosen school each time you shop and scan.

3

Asda does the rest
The money raised will be donated through Parentslink to schools to spend on what they need most. This won't affect your own Cashpot earn.

Once opted in and selected a school, we will add £1 to your chosen schools Cashpot to help get them started.

Each school will get an additional £50 added to their Cashpot, after at least one customer has shopped and scanned their Rewards app.



Noticeboard...



KINGSFIELD FIRST SCHOOL, BIDDULPH

MULTI SPORTS HOLIDAY CLUBS

Come and join us for some sports, games and activities from **October 28 - November 01**. Our action-packed program gives children the chance to remain active, develop skills and make new friends within a safe and secure program. We provide an environment where everyone is challenged and enjoys themselves.

TEAM SPORTS



ALTERNATIVE SPORTS



MULTI SPORTS



ENRICHMENT ACTIVITIES



Alongside our regular timetable we will be offering some fantastic additional **FREE** activities within our Booster program. Please see our schedule of events on our MyASM booking portal.

BUG CLUB
INFLATABLES
MUSICAL MAYHEM
PUMPKIN CARVING
MONSTER MASH (DISCO/PARTY)
BRING A BIKE & SCOOT SKILLS

Ofsted
Registered

We accept payment of childcare vouchers from most schemes. Applies at selected venues

From
£25.00
per day



Half-Day & Wrap-Around options available

Book now at asmsports.co.uk

Call: 01782 366332 Email: info@asmsports.co.uk



OPEN DAY! AT KINGSFIELD FIRST SCHOOL

COME AND VISIT US!

Wednesday 23rd October 10.30am

Monday 18th November 1.30pm

Monday 13th January 9.30am

CALL OR EMAIL THE SCHOOL
TO BOOK ON A VISIT

01782 973800

office.kng@cflptrust.co.uk

Children First
Learning Partnership
INSPIRING EXCELLENCE TOGETHER



October is walk into school MONTH

Get involved and get active by pledging to walk to school at least once a week throughout October.



air
aware
Staffordshire

Walking to school is great for your mental and physical health and also helps the environment!

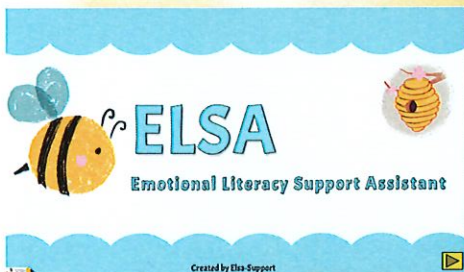
Discover more at
staffordshire.gov.uk/activeschooltravel

Staffordshire
County Council

6300 111 8000



This week our spotlight
is on...



We are proud to be an ELSA school, led by our ELSA support assistant, Mrs Stevens. An ELSA (Emotional Literacy Support Assistant) is a member of staff who is trained to support children in the development of their emotional literacy.

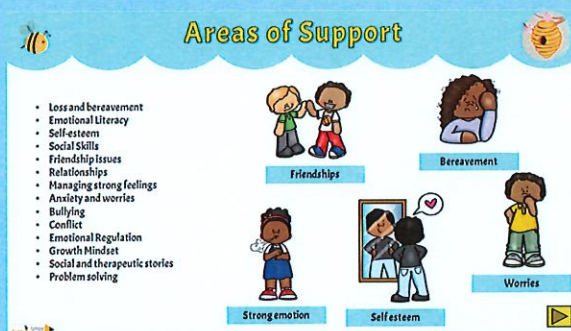
What is Emotional Literacy?

Understanding and coping with the feelings about themselves and others.

Developing high self-esteem and positive interactions with others.

Being emotionally literate helps children focus better on their learning.

Some of the areas I may work on:



How does ELSA work?

A regular slot once a week during school time for 20-30 minutes.

Sessions are usually 1:1 but can also take place in small groups and are tailored to the specific needs of the child.

It is an intensive programme which usually takes place for 6 weeks, however, this can be extended according to need.

Sessions are flexible and may include board games art and craft or some other activity.

They always include time to talk.

A student's progress is reviewed a minimum of half-termly.



Please see our website for more
information or speak to a member of staff.

