

Friday, 26th April 2024

Kingsfield's



NEWSLETTER



A message from Mrs Hodson...

Super proud headteacher moment...on Thursday Dougie Mac revisited our school to present our wobbly cheque following our recent fabulous fundraising for their charity. I am so pleased to announce that we raised a whopping £1566.68!!!! This is incredible and as a result we have earned a gold leaf on their tree of thanks. This is another example of why our school is so special-well done and thank you Team Kingsfield!

During a rare moment of sunshine, our Year 3 children attended the James Bateman netball festival. They had a wonderful time and made us incredibly proud with their excellent behaviour and sporting attitudes. Well done Year 3! In keeping with our spotlight for this week, we have a communication update: The Children First Learning Partnership are moving away from Twitter (X) to Facebook from 6th May. To keep up to date with the latest news about what is going on in our Trust please like and follow the new Facebook page at <https://facebook.com/ChildrenFirstLP>

We hope you all have a lovely weekend, from Mrs Hodson, Ozzy, Elvis and all at Team Kingsfield. PS Just a reminder that we will not be open next Thursday, 2nd May, as our school is being used for voting.

Next Week...

Monday	
Tuesday	FF swimming Pram to Primary 9-12pm
Wednesday	Toddler Play & Stay 2.30pm PTFA
Thursday	SCHOOL CLOSED FOR VOTING
Friday	

Coming Up in May:

- 9th May School Photos
- 15th May EYFS + KS1 disco 3.15-4.30pm
- 16th May KS2 disco 3.15-4.30pm
- 23rd May BB Forest School Parent Engagement 1.15pm
- 24th May Last day of term

This Week's
Winners
is: Charming
Cheetahs



Class	Attendance
Brilliant Butterflies	95%
Charming Cheetahs	99%
Perfect Panthers	93%
Learning Lions	94%
Super Squirrels	91%
Fantastic Foxes	96%
Wise Owls	97%

School Matters!



Attend Today, Achieve Tomorrow



Next week
we are on
week 2 of
our lunch
menu

Our whole school
attendance target is 96%.
This week, our school
attendance was: 95%

PSHRE Policy Review

Our PSHRE policy has been reviewed. PSHRE lessons are taught using the 3D PSHE scheme in Key Stage 1 and 2 and through Development Matters in EYFS. This covers all of the statutory requirements of 'Relationships and Health Education (RHE)' and is a fundamental part of the curriculum.

Schools must consult with stakeholders to ensure that there is a general consensus on our approaches to our policy.

We are asking parents/ carers to read the updated policy, which can be found on the curriculum page under PSHRE on the school website.

Please email any questions or comments, by the 30th April to:
office.kng@cflptrust.co.uk



Rewards and Celebrations



- Clever Caterpillars - Molly-Mai
- Brilliant Butterflies - Cody S
- Charming Cheetahs - Eddie D
- Perfect Panthers - George D
- Learning Lions - Rebecca
- Super Squirrels - Leila
- Fantastic Foxes - Violet
- Wise Owls - Mason H

- Clever Caterpillars - Roman
- Brilliant Butterflies - Elijah
- Charming Cheetahs - Isabelle
- Perfect Panthers - Chloe-Leigh
- Learning Lions - Millie-Rose
- Super Squirrels - Grace
- Fantastic Foxes - Poppy
- Wise Owls - Poppy H

- Clever Caterpillars - Elina
- Brilliant Butterflies - Chloe
- Charming Cheetahs - Beau
- Perfect Panthers - George M
- Learning Lions - Ezra
- Super Squirrels - George C
- Fantastic Foxes - Harry H
- Wise Owls - Isaac



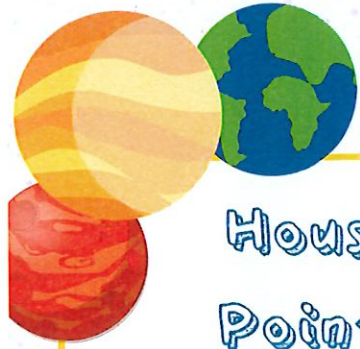
Other Celebrations....

Well done to Ryan for winning player of the week in football

Well done to Ayla for a brilliant dancing show

Well done to Amelia for getting dancer of the week

Please send an email to office.kng@cflptrust.co.uk if you would like to share any of your child's outside of school achievements.



House Points

Mars	556
Earth	234
Saturn	337
Jupiter	294



This week our spotlight is on communication...

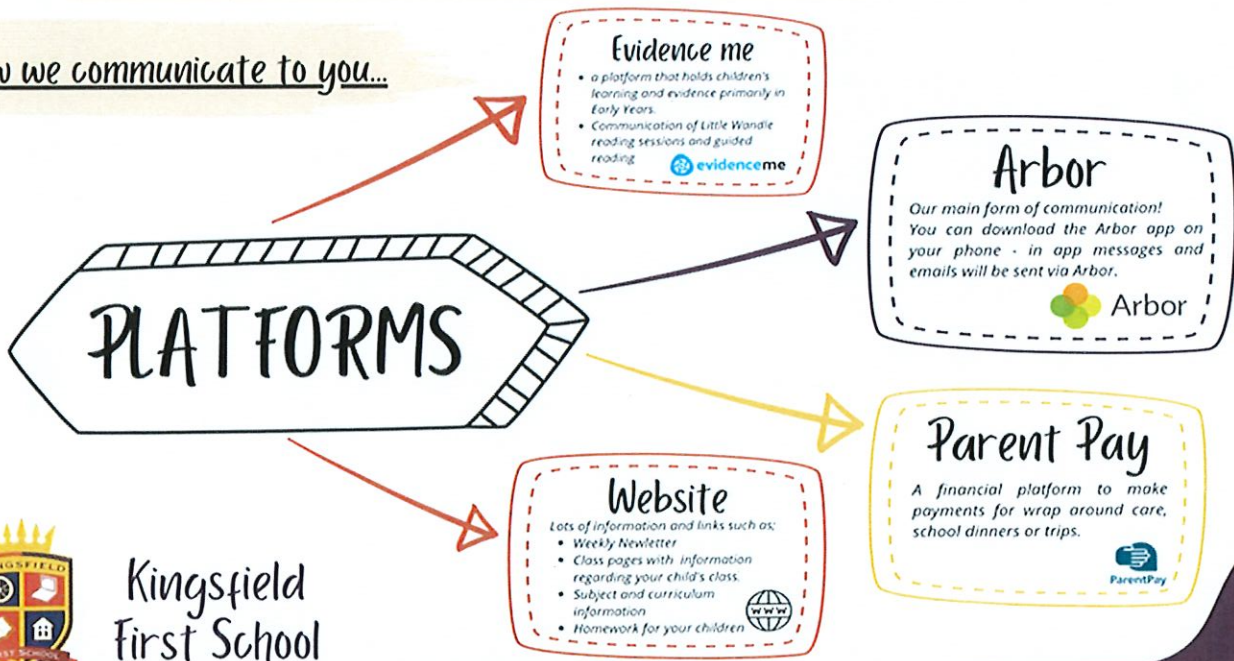


Arbor App Messaging- this will be monitored during normal working hours (8.30- 5.30 pm)

Arbor is our main communication portal at Kingsfield. Although 100% of our parents have signed up to Arbor, we are aware that for some parents, messages are not being read and that the app is not being accessed, which means important information is being missed. Having looked further into this, we have found this could be due to 'push' notifications not being enabled for Arbor. I have attached a link below to offer support and guidance for using Arbor or alternatively please speak to a member of staff who will be more than happy to help.

<https://support.arbor-education.com/hc/en-us/articles/360020008077-In-app-messages-in-the-Parent-Portal-and-Arbor-App>

How we communicate to you...



Kingsfield First School

Facebook is Kingsfield's chosen social media platform for sharing information and insights into our children's education. Each week classes will share learning/events/activities that the children have taken part in. Facebook will also be used by the office to promote events e.g. open nights, fayres.

Please ensure that you 'like' our page and turn on notifications to make sure that you get all of the updates and never miss out on the insights into your child's journey at Kingsfield.



Please note that our Twitter (X) account is no longer in use.

